

A Simplified and Versatile Glass-Wall System



ROLEN
by Modernus

We are ROLEN



With Rolen, we've thought of everything so that you don't have to.

Rolen was created to respond to an unmet need for contemporary architectural products specifically designed to simplify installation, reduce lead time, and maximize return on investment.

With the SL01 launch, our engineers have worked out all the details to create a modular kit-of-parts for glass-wall systems stocked in the US in easy to order kits with an online configuration platform.

The extrusions and hardware are pre-machined and packaged in ready to specify, standard configurations that include all the necessary components for installation so that SL01 can accommodate every size of project.

Door modules are even reversible so that left or right-handed applications can be installed with the same kit.

Rolen is the outcome of five years research & development at Modernus.

The Result

- 01** An Innovative and Streamlined Platform
We built an online configuration platform with you in mind. Fast, easy, and reliable.
- 02** Short Lead Time
From specification to bid package onto delivery, we have efficiency in mind.
- 03** Value-Driven
Rolen is a sophisticated and elegant flexible price conscience solution, highly customizable and exceptionally built.



4 Simple steps...

Boom. A complete bid package and cost breakdown.

Why SL01

SL01

A highly engineered & designed glass-wall system. Simplified installation, ordering, and streamlined delivery.



1 – No drilling into the frame.
Adjustable—sliding strike plate
Adjustable—sliding hinges

2 – Trimmable frame.
Framed doors
Framed sliding doors

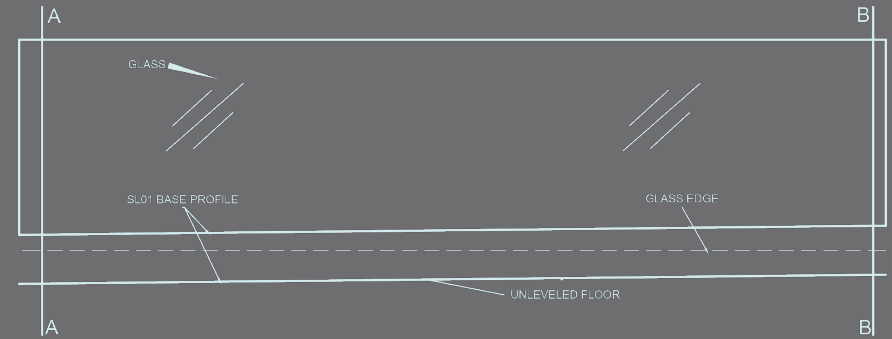
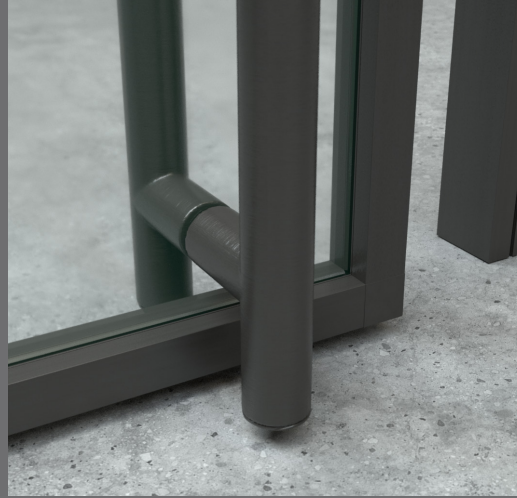
3 – Door leaf— $\frac{3}{8}$ " glass to $\frac{1}{4}$ " glass by flipping gaskets
Frame— $\frac{3}{8}$ " glass to $\frac{1}{2}$ " glass by flipping gaskets

4 – Easily left-hand door to right-hand door, no additional parts needed

5 – Go from framed to frameless with the same hinges

Switch seamlessly between pivot and sliding doors, ensuring last minute floor plan adjustments

04

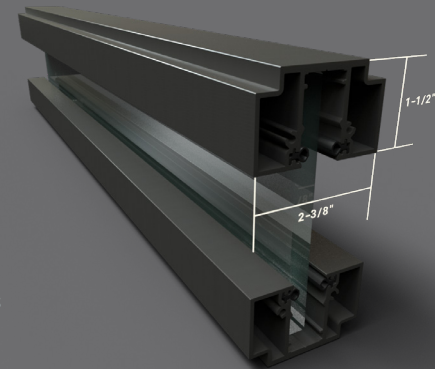


No Floor Leveling

SL01 has a $\pm 1"$ tolerance in the top, bottom, and side frames, which gives our system and overall tolerance in all directions. This tolerance ensures that no floor leveling is required.

Universal Frame

SL01 is a center position glass system. SL01 utilizes a single frame to create a complete system and make up the top, bottom, and side rails. This non-sequential, non-handed kit-of-parts makes for simplified specification and quick installation, saving you time & money.



No Hold-To Dimensions

The SL01 universal frame system is shipped to site and then manipulated on the field to the dimensions of the as-built finished opening. The door leaf is framed on-site, which allows for necessary modifications in real-time to ensure a perfect fit.

05

Specs. and Hardware

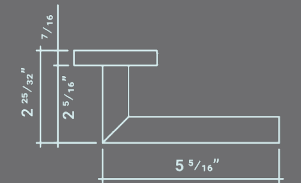
SL01

Product Features

- Single aluminum extrusion to create the frame
- 31 available SKUs—build any condition you want
- Adaptable to any site condition
- Center-loaded single-glazed system
- Locally sourced glass
- Short lead time, ready-to-ship
- Door types: pivot or sliding, framed or frameless glass, or solid wood
- Optional applied mullions
- Optional door-wall starter
- Error proof—color coded to minimize errors
- Production is simplified, not tied to any specific project

Dimensions

- Frame width 1-1/2"
- Frame depth 2-3/8"
- Frame height max 10'-0"
- Glass thickness 3/8" or 1/2"
- Installation tolerance +/- 5/8"
- No floor leveling required



Finishes

Black or grey powder-coated aluminum

Standard Joints

Polycarbonate extrusions

Construction

Architectural grade aluminum alloys

Accessibility

ADA compliant door clearances, surfaces, and hardware

Acoustics

- All profiles come with acoustic gaskets
- Sound transmission class varies per glass type
 - Single glazed STC 36-41



Contact

rolen.com
derek@rolen.com
O: 800.755.8940
M: 574.360.1293

Social

Instagram: @rolen_usa
LinkedIn: @rolen_usa

